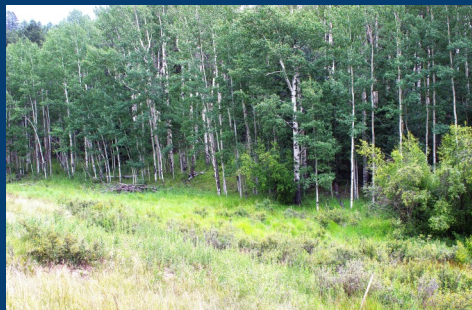
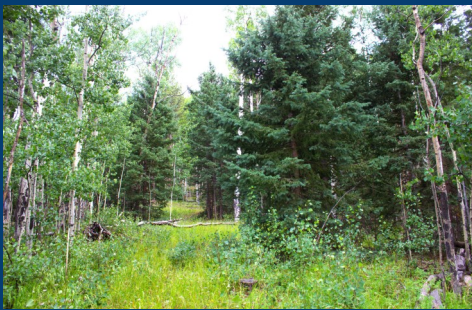


New Listing! \$22,500

A Perfect Piece of Colorado Awaits!

344 Grey Eagle Dr

1.41 acres * Zoned R-1 * MLS# 54673451



- A Perfect Piece of Colorado Awaits!
- Just outside historic Cripple Creek, this 1.41-acre parcel is the perfect setting for your custom mountain home. Only minutes from paved Teller 1, you'll enjoy towering aspens, stately pines, and open meadows that create a peaceful, private retreat. Mountain Mutual Water serves CCME; a private septic system will be required. With easy access, gradual topography, and serene surroundings, this property is ready for your vision.

As part of Colorado Mountain Estates, you'll have access to exceptional community amenities, including an indoor pool, dry sauna, 24-hour gym, library, game room (with darts, ping pong, billiards, & air hockey), disc golf, walking trails, tennis/pickleball/basketball courts, a kids' playground, community business office, and event room.

